

*Adache Perspective is a periodic corporate newsletter published by Adache Group Architects to inform their clients, prospective Clients, and friends of their current architectural and interior design projects.*



ONE TAMPA - TAMPA, FL

## ONE TAMPA TAMPA, FLORIDA

Situated at the center of downtown, "One Tampa" aspires to serve as a distinctive architectural landmark that immediately captures attention within the city's skyline. The 42-story tower seamlessly pairs modern aesthetics, featuring clean lines and high-performance glass curtain walls, with the addition of curved terraces. In a nod to the history of the neighborhood, a five-story brick facade has been thoughtfully incorporated at the northeastern street-level corner. Adorned with early 20th-century-style arched windows, intricate stone embellishments, and accents of blackened steel, it serves as an industrial chic entrance to the lobby, offering a warm and contemporary welcome for residents.

The mixed-use project is being developed by Kolter Urban, with 225 condominium units along with commercial spaces on the ground floor. Residents will enjoy exclusive access to a range of indoor-outdoor amenities located on the 11th and 12th floors. These amenities include a pool with a spa, a state-of-the-art fitness center, a pet park, a business lounge, a social club room, and a skyline bistro where residents can indulge in cocktails, grab-and-go breakfast, lunch, and dinner offerings.



HOTEL 42 - FORT LAUDERDALE, FL

## HOTEL 42 FORT LAUDERDALE, FLORIDA

Hotel 42, situated on the picturesque Fort Lauderdale Beach, this 15-story hotel is set to offer 75 guest rooms. Featuring a captivating "sky lobby" on the fifth floor, extending gracefully over two stories, providing breathtaking views of the ocean and the Intracoastal Waterway. The building's design is characterized by a fin-like architectural element that runs throughout the structure, culminating at the 15th-level amenity deck rooftop.

The fifth floor offers an array of amenities, including an outdoor terrace with seating areas and a cozy fire pit, an indoor lobby seating area, a lounge, and an exclusive bar reserved for guests. On the 15th floor, guests can relax on the pool deck with cabanas, lounge seating, and a food service area with a cafe restaurant.



## adache group architects

### AWARD WINNING HOSPITALITY ARCHITECTS

For over five decades, Adache Group Architects has led the way in creating memorable hotel guest experiences. As a top firm in the U.S. specializing in hospitality design, our team of architects and interior designers share a passion for bringing designs to life by creating spaces and connecting people to places. Our hospitality design team offers global expertise in architecture, planning, and interior design applying it to projects of all scales, resulting in dozens of award-winning designs that enhance guest experiences and create lasting value.

Having designed hundreds of hospitality projects from limited service and select service hotels to central city high-rises to island mega resorts, Adache has the experience and brand reputation to give owners and developers confidence in them for a successful project.

Our hospitality architects blend their deep industry knowledge with emerging trends from various sectors to create memorable hospitality experiences. As a full-service firm, we bring exceptional talent to every project. We conduct thorough research and analysis to carefully plan the intricate balance of elements required for successful, sustainable, and attractive projects.

The firm's ability to consistently perform at a high level for over fifty years is attributed to its structured approach, stringent standards, exceptional staff, and top-notch management.

Successful architecture demands the highest level of expertise and professionalism. While each project and program is unique, Adache Group Architects adheres to consistent design principles throughout the process.



## COURTYARD BY MARRIOTT HOLLYWOOD, FL



Nestled along Tyler Street in Hollywood, Florida, the proposed Courtyard Marriott hotel promises to be an exciting new destination for both visitors and tourists alike. Ideally situated within a leisurely stroll of the vibrant Young Circle park, this hotel is set to offer a total of 115 well-appointed guestrooms. Additionally, guests will have access to a dedicated amenity floor, which includes a state-of-the-art fitness center, a refreshing pool area, and an inviting bistro bar. The hotel's ground level has been thoughtfully designed to seamlessly integrate with the existing pedestrian walkway. This is achieved by extending the porte cochere canopy outward to Tyler Street. Warm, inviting materials and lush landscaping have been carefully incorporated to create a welcoming and comfortable ambiance as guests approach the property.

Sanjay Patel, the visionary founder of MHG Hotels, shared his enthusiasm for the project, stating, "The stunning new hotel was designed to appeal specifically to Hollywood visitors looking for a truly unique experiential stay."

ADACHE  
CONSISTENTLY  
AWARDED  
TOP  
DESIGN FIRM



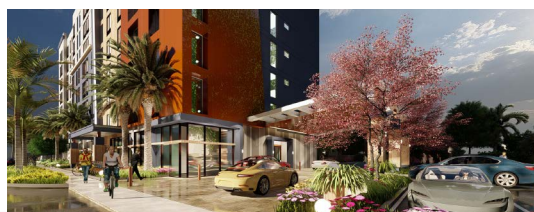
## HOME 2 SUITES BY HILTON PLANTATION, FL

Home2 Hotel is a seven-story hotel spanning 73,100 sq ft, featuring a total of 122 hotel rooms. Adjacent to the hotel, there will be a spacious 2,500-square-foot pool deck and a 740-sq ft outdoor lounge area. The design of the building has been thoughtfully planned to incorporate a variety of warm materials and color palettes that align with the hotel brand. These design elements will complement the surrounding landscape, resulting in an aesthetically pleasing architectural style that harmonizes with the natural environment of South Florida. Additionally, modifications will be made to an existing commercial building located north of the hotel. A new building footprint, porte cochere for convenient hotel guest drop-offs, parking spaces, and the installation of a crosswalk to connect the hotel with the retail building.



## STAYBRIDGE SUITES FORT LAUDERDALE, FL

The Staybridge Suites in Fort Lauderdale, Florida is an eight-story, 124-room hotel that combines clean lines and functional features. It offers various new amenities, such as an outdoor living room area with a fire pit, a great room for social gatherings, and scheduled "socials" three times a week. Additionally, there's a cozy living room for smaller groups and quiet moments. The hotel, spanning 92,032 square feet across eight stories, includes a pool, gym, outdoor living area with a fire pit, and a complimentary breakfast space. It provides king studio suites, two-bedroom double queen rooms, and king one-bedroom suites for extended stays. Located on State Route 84, this hotel contributes to the revitalization of the surrounding community and street scape while preserving existing live oak trees. Its exterior facade exudes a vibrant and elegant style, while the interior offers a welcoming "home away from home" experience.





**UNDER CONSTRUCTION**



**ALOFT HOTEL - FORT LAUDERDALE, FL**



**THE PENDRY - TAMPA, FL**



**CASA MURANO - FORT LAUDERDALE, FL**



**OLD TOWN SQUARE - POMPANO BEACH, FL**

**RECENTLY COMPLETED**



**HILTON MARINA - FT. LAUDERDALE, FL**

**HOMEWOOD TEMPO - FORT LAUDERDALE, FL**

The 11 story, 169 room Homewood/Tempo Hotel, designed as a dual-brand, is situated just a few blocks north of Las Olas Blvd. The Tempo brand, falls into the upscale select service category. And the Homewood brand is a leader in upscale limited-service accommodations. The design employs warm color palettes and decorative cladding to accentuate the porte-cochère. The vehicular garage incorporates multiple vertical aluminum panel screening elements of varying widths, creating an illusion of movement for passersby on foot or in vehicles. The ground floor is thoughtfully designed, featuring a spacious guest lobby that connects to an inviting outdoor patio. The hotel's amenities include a fitness center, a café, a bar, a market, a fourth-level pool deck, guest laundry facilities, a meeting room, and a stylishly designed lobby space. This dual-brand hotel promises a luxurious and satisfying experience for its guests.



**HOMEWOOD SUITES POMPANO - POMPANO BEACH, FL**

Homewood Suites in Pompano Beach is a 9-story, 163-guest room hotel. The ground floor lobby offers lounging and includes a spacious breakfast area. Additionally, a recessed outdoor patio lounge serves as an extension of the central hub. The building's design incorporates recesses and extrusions to break the monotony of a flat façade. The garage screen enhances the modern design with horizontal wood-look slats and integrated LED fixtures, creating a sense of speed and motion from the exterior. On the fifth level, there's an expansive 11,000 sq ft outdoor amenity deck featuring seating, lawn areas, an outdoor kitchen, fire pits, and an 800 sq ft swimming pool strategically placed to capture the afternoon sun. Inside the building, a fitness center with storefronts overlooks the pool deck. The tower extends to the ninth level, with units facing the street and the Atlantic Ocean, as well as interior units with views of the amenity deck.



**WILTON HOTEL & POOL CLUB - WILTON MANORS, FL**

The Wilton Hotel & Pool Club is a seven-story full service boutique hotel, which includes 123 rooms, 99 parking spaces, a rooftop dining area, pool, bar and grill, meeting rooms, and coffee bistro. Outside murals are also planned. With stylish design, inviting lobby and spectacular roof top experience, the Wilton Hotel & Pool Club stands to transform an unsightly commercial lot into an iconic beacon of Wilton Manors hospitality. The design is envisioned to restore the heritage of Five Points as the architectural gateway to the Island City and its Arts & Entertainment District. Wilton Manors officials have made a concerted effort in recent years to make the city one where residents can “live, work, play.”



They have also worked to make the city a beacon for LGBT tourists.

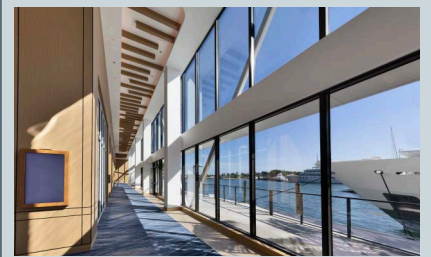
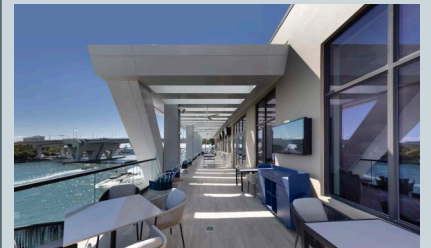


### TOWNE PLACE SUITES - CLEWISTON, FL

Nestled along US-27 corridor, Towne Place Suites Clewiston is a four-story hotel within the Marriott portfolio. Positioned merely a mile to the west of Clewiston's vibrant city center and a stone's throw away from the serene shores of Lake Okeechobee, this splendid hotel offers a total of 89 thoughtfully designed guestrooms. Among these, guests can choose from an array of king and queen suites, each meticulously appointed to cater to the needs of those embarking on extended stays. As an additional hotel features a welcoming outdoor pool area, inviting guests to bask in the warm Florida sunshine, take refreshing dips, and unwind poolside. With its prime location, commitment to top-notch accommodations and services, and the promise of an unforgettable Florida experience, Towne Place Suites Clewiston is set to become an enduring beacon of hospitality.



### ADACHE DESIGNED HILTON MARINA FORT LAUDERDALE WINS AWARD OF MERIT ENR SOUTHEAST 2023 BEST PROJECT HOSPITALITY



### 87 ISLE OF VENICE- FORT LAUDERDALE, FL

Situated on Isle of Venice in Fort Lauderdale, this project comprises a 5-story luxury condominium building consisting of a total of 8 units. Each unit boasts 3,000 square feet of living space, offering 4 bedrooms and its very own private rooftop patio. The architectural design showcases floor-to-ceiling glass windows, along with a series of extended balconies and frames that provide views of the waterway. The structure is elevated from street level, and it's adorned with a sequence of vertical wood-look slats that harmonize with the warm tones and materials used throughout the building, creating a cohesive and visually appealing aesthetic.



### ADACHE'S INTERIOR DESIGN TEAM

Adache's interior design team create spaces for living and working that are innovative not only from a visual impact but also for health, comfort, flexibility and ease of use. How a place makes us feel is paramount and Adache's designers understand the power of this emotional connection. Our team specializes in all types of projects from new construction, renovation or adaptive reuse and our focus is on creating experiences that exceed our client's expectations.

### AVID HOTEL - DANIA BEACH, FL

Elegantly rising along 321 North Federal Highway, the Avid Dania Beach proudly stands as a distinguished 6-story haven, graced with the prestigious IHG branding. With an offering of 105 well-appointed guestrooms, this midscale hotel caters to the diverse needs of travelers. Conveniently located minutes away from both the Fort Lauderdale-Hollywood International Airport and the sun-kissed beaches, it presents itself as the ideal choice for the leisurely traveler in search of relaxation and adventure. The hotel's accommodations feature a blend of king and queen guestrooms. This site holds a unique history, having previously served as the home to a gas station. Today, it is undergoing a brownfield remediation effort, breathing new life into the area. The project, driven by a commitment to sustainable building practices, seeks to not only revitalize but also elevate the surroundings. This Avid hotel is poised to transform this corner of Dania Beach into a vibrant and eco-friendly retreat, promising a blend of modern hospitality and environmental stewardship.



## adache group architects

550 S Federal Highway  
Ft. Lauderdale, FL  
33301  
p: 954.525.8133  
[www.adache.com](http://www.adache.com)  
FL License  
#AA13000579



**"Architecture is the learned game, correct & magnificent, of forms assembled in the light."**  
- Le Corbusier